

PROJECT PROPOSAL

Title: **PROCUREMENT OF BRAND-NEW MOTOR VEHICLES AS THE REFLECTING PROGRAM OF THE MINDORO STATE UNIVERSITY**

Implementing Agency: **MINDORO STATE UNIVERSITY – MAIN CAMPUS**
Alcate, Victoria, Oriental Mindoro

Head of Agency: **ENYA MARIE D. APOSTOL, Ph.D.**
SUC President III

Contact Person: **ENGR. ARVIN P. TOLENTINO**
Director for Auxiliary & General Services

NOEL A. ROXAS
Chief – Machinery Unit

Total Project Cost: **₱7,800,000.00**

Duration: **N/A**

Source of Fund: **GAA FY 2026**

OFFICE OF THE PRESIDENT
RECEIVED
DATE: JAN 08 2026
TIME: 11:03
BY: RP

Mindoro State University
RECEIVED
RECORDS OFFICE
BY: RICHARD TEMPIO
DATE: JAN 08 2026
TIME: 9:24
CORPORAL NO. 260110079

PROJECT DESCRIPTION

Introduction

The re-fleeting program of Mindoro State University involves the acquisition of brand-new motor vehicles to improve transportation efficiency, safety, and sustainability. This initiative addresses issues related to aging vehicles while aligning with the university's commitment to innovation and environmental responsibility. It also supports the welfare of students, faculty, and staff, reinforcing the institution's dedication to operational excellence and forward-thinking development.

Rationale/Significance

The Government Vehicle Re-fleeting Program is a strategic initiative aimed at modernizing and optimizing the fleet of government-owned vehicles to enhance operational efficiency, reduce maintenance costs, and promote sustainability. As part of the broader public sector reform agenda, this program ensures that government agencies are equipped with safe, reliable, and fuel-efficient vehicles to support the effective delivery of public services.

Over time, aging government vehicles have led to increased fuel consumption, frequent breakdowns, and higher emissions, negatively impacting productivity and environmental goals. The re-fleeting program addresses these challenges by systematically replacing outdated vehicles with newer, eco-friendly models that comply with modern safety and emissions standards.

The acquisition of new motor vehicles under the re-fleeting program at Mindoro State University – Victoria (Main) Campus represents a vital investment in strengthening the university's transportation system, particularly given its remote and rural location in Barangay Alcate, Victoria, Oriental Mindoro. The campus serves a geographically dispersed student population, making dependable transportation essential for academic continuity, administrative operations, research and extension, and production.

Replacing outdated vehicles with brand-new units addresses persistent operational challenges such as frequent mechanical failures, high maintenance costs, and unreliable service. These modern vehicles are equipped with advanced safety and efficiency features, ensuring secure and timely mobility for students, faculty, and staff. Additionally, newer models typically



Procurement of Brand-New Motor Vehicles as the Re-fleeting Program of MinSU | Page 1 of 9

[MinSU-PME-PPA-24-0225]

•Main Campus, Alcate, Victoria

•Bungabung Campus, Labasan, Bongabong

•Calapan City Campus, Masapit, Calapan City

offer improved fuel economy and lower emissions, contributing to environmentally responsible operations.

This initiative aligns with national policies like the Philippine Development Plan (PDP) and Sustainable Development Goals (SDGs), reinforcing the government's commitment to good governance and innovation. SDG 9: Industry, Innovation and Infrastructure, by modernizing university logistics infrastructure:

- SDG 11: Sustainable Cities and Communities, through safer, more sustainable transport solutions;
- SDG 13: Climate Action, by reducing the campus's carbon footprint and promoting environmental stewardship.

More than a logistical enhancement, this re-fleeting program reflects Mindoro State University's broader vision of innovation, inclusivity, and sustainable development. By investing in modern transportation solutions, the university reinforces its role as a proactive and responsible institution dedicated to delivering quality service, ensuring safety and well-being, and advancing the long-term sustainability of its operations and the communities it serves.

Objectives

General:

Through the re-fleeting program, we aim to build a more efficient, sustainable, and equitable public service fleet that better serves the University stakeholders in providing quality and timely services to the Filipinos.

Specific:

The proposed procurement of University service motor vehicles is very vital for the following reasons:

1. Improving Service Delivery: Ensuring timely and reliable transportation for government operations.
2. Cost Efficiency: Reducing long-term maintenance and fuel expenses.
3. Environmental Sustainability: Lowering carbon footprints through fuel-efficient and electric/hybrid vehicles.
4. Safety and Compliance: Upgrading to vehicles that meet current roadworthiness and safety regulations.

Methodology

The objectives of the re-fleeting program at Mindoro State University – Victoria (Main Campus) will be achieved through a systematic and transparent process that includes the following key steps:

1. Needs Assessment and Evaluation:
 - o A thorough evaluation and inventory of the existing university vehicles will be conducted to identify operational issues, safety concerns, and cost inefficiencies. This assessment will help determine the number and types of vehicles to be replaced or acquired.
2. Specification and Procurement Planning:
 - o Based on the assessment, technical specifications will be developed to ensure the procurement of vehicles that meet modern safety, fuel efficiency, and environmental standards. The procurement process will follow government guidelines and university policies to ensure transparency, accountability, and value for money.
3. Sourcing and Acquisition:
 - o Vehicles will be carefully selected and procured through the PS-DBM Virtual Store. Emphasis will be placed on sourcing units with lower emissions, better fuel economy, and advanced safety features.



Procurement of Brand-New Motor Vehicles as the Re-fleeting Program of MINSU | Page 2 of 9
[MINSU-PME-PPA/25-0225]

• Main Campus, Alcate, Victoria

• Bangabang Campus, Labasan, Bangabang

• Calapan City Campus, Masipit, Calapan City

4. Deployment and Utilization:

- Once procured, the new vehicles will be deployed strategically across various operational units within the campus to support academic services, administrative functions, and community outreach. Usage will be monitored to maximize efficiency and extend vehicle lifespan.

5. Monitoring and Evaluation:

- A monitoring framework will be established to track vehicle performance, maintenance costs, and fuel consumption. Data collected will be used to assess the impact of the program and guide future transportation-related initiatives.

6. Sustainability Integration:

- The program will incorporate best practices in sustainable transport management, aligning with the university's commitment to the United Nations Sustainable Development Goals (particularly SDG 9, SDG 11, and SDG 13). Regular training and awareness campaigns will be conducted to promote responsible vehicle use among drivers and staff.

Expected Outputs & Outcomes

Expected Outputs:

- Acquisition of brand-new, fuel-efficient, and environmentally compliant motor vehicles for MinSU – Victoria (Main) Campus.
- Decommissioning or repurposing of aging, inefficient university vehicles.
- Improved transportation services for students, faculty, staff, and administrative operations.
- Institutionalization of a vehicle monitoring system to track usage, fuel efficiency, and maintenance.

Expected Outcomes:

- Improved Operational Efficiency** – Reduced vehicle breakdowns and maintenance costs, ensuring timely and reliable transport for academic and administrative needs.
- Enhanced Safety and Accessibility** – Safer transport services supporting inclusive access to education, especially for students and personnel from distant or underserved areas.
- Environmental Sustainability** – Lowered carbon emissions through the use of newer, fuel-efficient vehicles, contributing to climate action goals.
- Alignment with Strategic Frameworks:**

- SDGs:

- SDG 9 (*Industry, Innovation and Infrastructure*) – through upgraded transport systems.
- SDG 11 (*Sustainable Cities and Communities*) – by providing safer and more sustainable mobility.
- SDG 13 (*Climate Action*) – via reduced emissions and efficient vehicle usage.

- PDP 2023–2028:

- Supports Chapter 12 (*Promoting Innovation*) and Chapter 14 (*Accelerating Climate Action and Disaster Resilience*) by incorporating sustainable technology in government operations.

- RDP – MIMAROPA:

- Advances goals under *Resilient and Sustainable Infrastructure* and *Environmental Protection*.
- University Mandate:
 - Strengthens support services essential to providing accessible, inclusive, and quality education; and demonstrates the university's commitment to responsible governance, innovation, and community welfare.

Potential Outcomes:

1. Improved Service Delivery

- More efficient and timely transportation for academic, administrative, and extension services, enabling smoother university operations.



[Handwritten signature]

2. **Increased Accessibility for Students and Staff**
 - o Enhanced mobility support for students and personnel from geographically isolated areas, promoting equitable access to education and university resources.
3. **Cost Savings Over Time**
 - o Reduced expenditures on frequent repairs, fuel consumption, and emergency vehicle rentals, allowing the reallocation of resources to other priority programs.
4. **Safer University Transportation System**
 - o Fewer road accidents and vehicle-related incidents due to the integration of modern safety technologies and well-maintained vehicles.
5. **Support for Environmental Goals**
 - o Lower greenhouse gas emissions through the use of more fuel-efficient vehicles, contributing to the university's climate action efforts.
6. **Positive Institutional Image and Reputation**
 - o Demonstrated commitment to innovation, sustainability, and stakeholder welfare strengthens the university's reputation as a forward-thinking and responsible institution.
7. **Replication Across Campuses**
 - o The successful implementation may serve as a model for similar re-fleeting initiatives in other MinSU campuses.
8. **Strengthened Partnerships and Funding Opportunities**
 - o Enhanced operational capacity may attract further investments or partnerships from government agencies, NGOs, or private sector stakeholders focused on sustainable development.
9. **Data-Driven Transport Management**
 - o Implementation of a monitoring system promotes data-informed decision-making for vehicle deployment, maintenance, and future upgrades.
10. **Contribution to Regional and National Development Goals**
 - o Alignment with the PDP, RDP, and SDGs demonstrates the university's active role in regional progress and national development.

Potential Impacts (PIs):

Social Impacts:

1. **Improved Access to Education and Services**
 - o Reliable university transportation ensures safer and more consistent mobility for students, faculty, and staff—especially those from rural and geographically isolated areas.
2. **Enhanced Safety and Well-being**
 - o Modern vehicles with advanced safety features reduce the risk of road accidents and transportation-related injuries.
3. **Increased Community Engagement**
 - o Better transport allows for expanded outreach and extension programs, strengthening the university's role in local development.
4. **Positive Institutional Image**
 - o Demonstrates the university's commitment to student welfare, public service, and innovation, fostering pride and trust among stakeholders.

Economic Impacts:

1. **Reduced Operational and Maintenance Costs**
 - o Fuel-efficient and reliable vehicles decrease long-term expenses related to repairs, fuel consumption, and emergency transport needs.
2. **Efficient Resource Allocation**
 - o Savings from lower vehicle-related expenditures can be redirected toward academic programs, infrastructure, or scholarships.
3. **Increased Productivity and Operational Efficiency**
 - o Timely and dependable transportation improves the delivery of services, supports logistics, and enhances workflow across departments.





Email: universityprocurement@msu.edu.ph
 Website: www.msu.edu.ph
 Address: +63 977 840 72 21

Environmental Impacts:

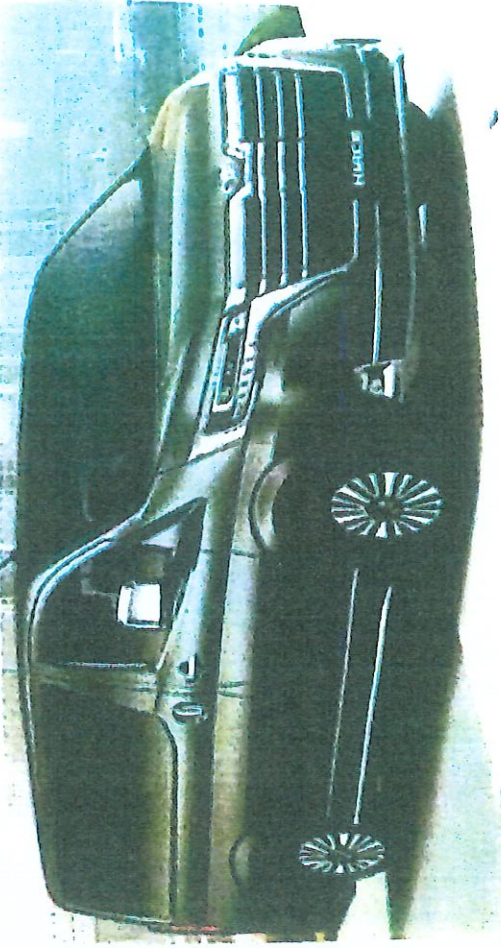
1. **Reduced Carbon Emissions**
 - o Newer vehicles emit less greenhouse gases, contributing to cleaner air and supporting the university's climate action goals.
2. **Promotion of Sustainable Transport Practices**
 - o The initiative encourages institutional awareness and adoption of greener alternatives in transport planning and use.
3. **Support for SDG and Climate Commitments**
 - o Aligns with SDG 13 (Climate Action) and national environmental goals by reducing the university's ecological footprint.

Target Beneficiaries:

The primary beneficiaries of the re-fleeting program are the students, faculty, and staff of Mindoro State University – Victoria (Main) Campus, particularly those who rely on university transportation for academic, administrative, and outreach activities. Secondary beneficiaries include partner communities served through the university's extension and research initiatives.

Photos and Specifications:

1. **Van**
 - ❖ Quantity: 1 Unit
 - ❖ Estimated Cost per unit: Php 3,300,000.00
 - ❖ Specifications:
 - Dimension and Weight:
 - Overall Dimensions (mm): 5,300 x 1,970 x 1,990
 - Wheelbase (mm): 3,210
 - Seating Capacity: 10
 - Engine:
 - Engine Type: Diesel, 1GD-FTV (4 Cylinder In-line Type DOHC, --16-Valve)
 - Engine Displacement (cc): not exceeding 2500CC for gasoline and 3000CC for diesel, or alternate fuel vehicle (AFV)
 - Maximum Output (ps/rpm): 176 ps / 3,400 rpm
 - Maximum Torque (Nm/Rpm): 450 Nm / 1,600 - 2,400 rpm
 - Fuel Capacity (L): 70
 - Transmission:
 - Power Transmission: 6-Speed AT
 - Front Brake/ Rear Brake: Ventilated Discs / Ventilated Discs
 - Tires: 235 / 60 R17
 - Wheels (size): 17" Alloy



[Handwritten signature]



2. Coaster

- ❖ Quantity: 1 Unit
- ❖ Estimated Cost per unit: Php 4,500,000.00
- ❖ Specifications:

➤ Dimension and Weight:

- Overall Dimensions (mm): 6,990 x 2,080 x 2,635
- Wheelbase (mm): 3,935
- Seating Capacity: 29

➤ Engine:

- Engine Type: Diesel, 4 Cylinders, 4.0L
- Engine Displacement (cc): not exceeding 6500CC for diesel
- Maximum Output (ps/rpm): 134 hp @ 2,500 rpm
- Maximum Torque (Nm/Rpm): 390 Nm @ 1,400 rpm
- Fuel Capacity (L): 95

➤ Transmission:

- Power Transmission: 5-Speed Manual Transmission
- Wheels (size): 17" Steel



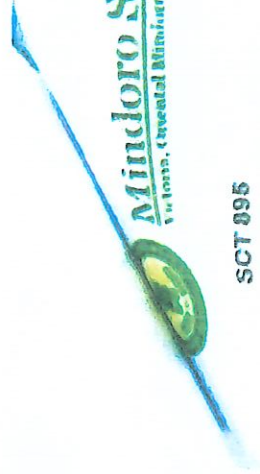
Photos of Vehicles for Replacement:

Mitsubishi Pajero



Procurement of Brand-New Motor Vehicles as the Re-fueling Program of MINSU (Pajero) of 9
[MINSU-PAJE-PPA-25-0225]

•Main Campus, Alcate, Victoria •Bongabong Campus, Labasan, Bongabong •Calapan City Campus, Mariposa, Calapan



SCT 895



Budgetary Expenses (Total Project Cost): 7,800,000.00

*Source of Funds	PS	MOOE	CO	Total
GAA 2026			7,800,000.00	7,800,000.00
Total				

Sustainability Plan

To ensure the long-term impact and responsible use of the newly acquired vehicles, Mindoro State University – Victoria (Main) Campus will implement the following sustainable measures:

- Preventive Maintenance Program**
 - A regular maintenance schedule will be enforced to maximize vehicle lifespan, reduce fuel consumption, and avoid costly repairs.
- Fuel Efficiency Monitoring**
 - Fuel logs and mileage tracking will be maintained to monitor consumption and promote eco-driving practices among university drivers.
- Driver Orientation and Training**
 - All drivers will undergo training on proper vehicle handling, road safety, and environmentally responsible driving techniques.
- Vehicle Usage Policy**
 - A clear policy on the responsible use of university vehicles will be enforced, prioritizing essential trips and shared transport to reduce emissions and costs.
- End-of-Life Planning**
 - Decommissioned vehicles will be disposed of in compliance with government guidelines, with consideration for recycling or parts recovery to minimize environmental impact.
- Integration with University Goals**
 - This plan aligns with the university's sustainability initiatives and supports **SDG 13 (Climate Action)** and **SDG 12 (Responsible Consumption and Production)**

Gender and Development (GAD)

By prioritizing transparency, accountability, and inclusivity, the re-fleeting program also incorporates gender-responsive measures, such as ensuring safe and accessible transportation for all employees, including women and persons with disabilities.



•Main Campus, Aklan, Victoria

•Bongabong Campus, Iloilo, Bangalung

•Calapan City Campus, Masipit, Calapan City

Procurement of Brand New Motor Vehicles as the Re-Fleeting Program of MINSU | Page 7 of 9
[MINSU-PME-PPA-25-0225]

09



WORKPLANWAYS FORWARD

After the completion of the re-fleeting program, Mindoro State University – Victoria (Main) Campus will implement a vehicle management and monitoring system to ensure optimal use and maintenance of the newly acquired units. Regular evaluations will be conducted to assess performance, fuel efficiency, and user satisfaction. The university also plans to explore the integration of hybrid or electric vehicles in future procurement cycles, further aligning with its sustainability goals. Lessons learned from this initiative will be documented to guide similar projects across other campuses and institutional units.

References (legal basis, or literature):

Commission on Audit. (n.d.). *COA circulars and guidelines on the utilization, maintenance, and disposal of government vehicles*. Commission on Audit, Republic of the Philippines.

Congress of the Philippines. (1999). *Republic Act No. 8749: Philippine Clean Air Act of 1999*. https://lawphil.net/statutes/repacts/ra1999/ra_8749_1999.html

Congress of the Philippines. (2003). *Republic Act No. 9184: Government Procurement Reform Act*. https://lawphil.net/statutes/repacts/ra2003/ra_9184_2003.html

Congress of the Philippines. (2019). *Republic Act No. 11285: Energy Efficiency and Conservation Act*. https://lawphil.net/statutes/repacts/ra2019/ra_11285_2019.html

National Economic and Development Authority. (2023). *Philippine Development Plan 2023–2028*. <https://pdp.neda.gov.ph/>

National Economic and Development Authority – MIMAROPA. (2023). *MIMAROPA Regional Development Plan 2023–2028*. <https://nro4b.neda.gov.ph/>

Commission on Higher Education. (n.d.). *CHED Memorandum Orders*. <https://ched.gov.ph/memorandum-orders/>

United Nations. (2015). *Transforming our world: The 2030 Agenda for Sustainable Development*. <https://sdgs.un.org/2030agenda>

Mindoro State University. (n.d.). *University Strategic Plan and Institutional Mandate*. Mindoro State University.

Prepared by:



ENGR. JOANNE FE M. GUTIERREZ
Project Development Officer II



RE: Procurement of Brand-New Motor Vehicles as the Re-fleeting Program of MinSU

Noted: *W fr*

JOHN EMMANUEL M. MERHAN

Coordinator, Women, Gender and Development, – Victoria Campus

Comment:

Proposed project is gender-sensitive and passed the GAD test. See attached GAD checklist for details.

Mary Ann M. Hernandez

MARYANN M. HERNANDEZ

Director for Planning, Monitoring & Evaluation

Comment:

This initiative reflects the university's commitment to improving its services. Acquiring new vehicles will not only ensure smoother and more efficient operations across campuses but also support the fulfillment of the university's mandate in providing accessible, responsive, and quality education and public service.

Reviewed by:

- Passed
 Failed due to: _____

For Revision

ENGR. ARVIN P. TOLENTINO

Director for Auxiliary & General Services

Recommending Approval:

Approved

Not Approved due to: _____

JOYLENE C. IGUYNES

VP for Admin and Finance

Approved:

ENYA MARIE D. APOSTOL, Ph.D.
SUC President III